

Building a Bigger School

175 Years of Development



A drawing of the College by A.F Watts as it appeared in 1833 showing the original building before any of the extensions were added.



This recent photograph shows the west extension, the first changes made to the College buildings in 1863. This extension added much needed dormitories and a dining hall. On the second floor is a modern extension, completed in 1955.



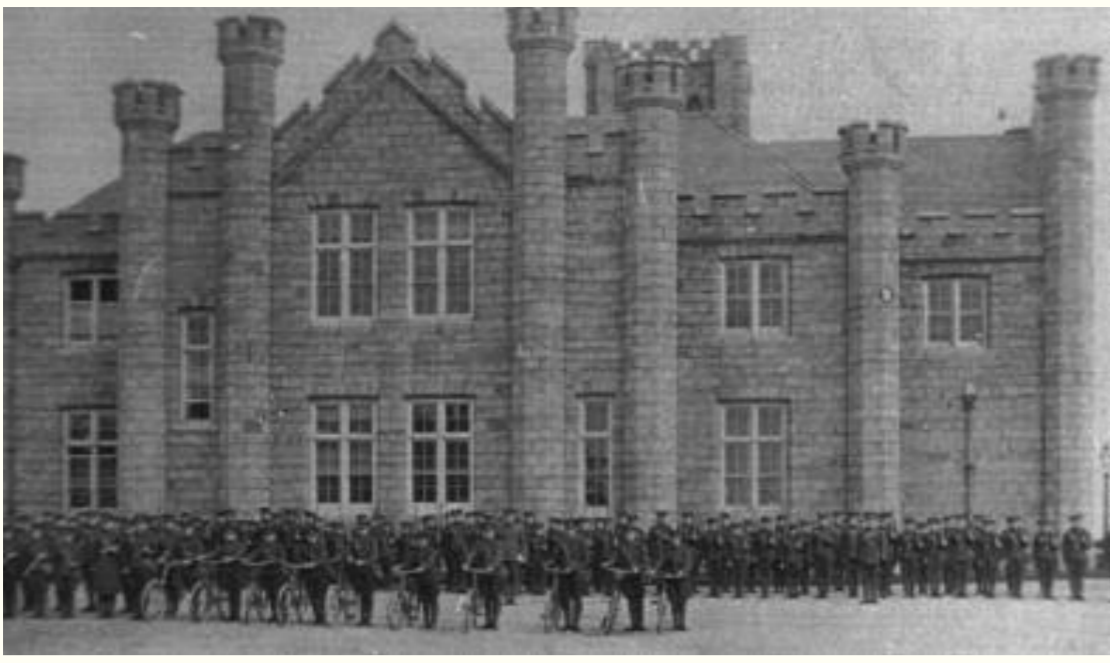
The Chapel of St Thomas was built in 1879.



Pleignier's House (Junior House) was built by Mr V. Pleignier in 1884, to accommodate 30 juniors, and later bought by the Trustees.



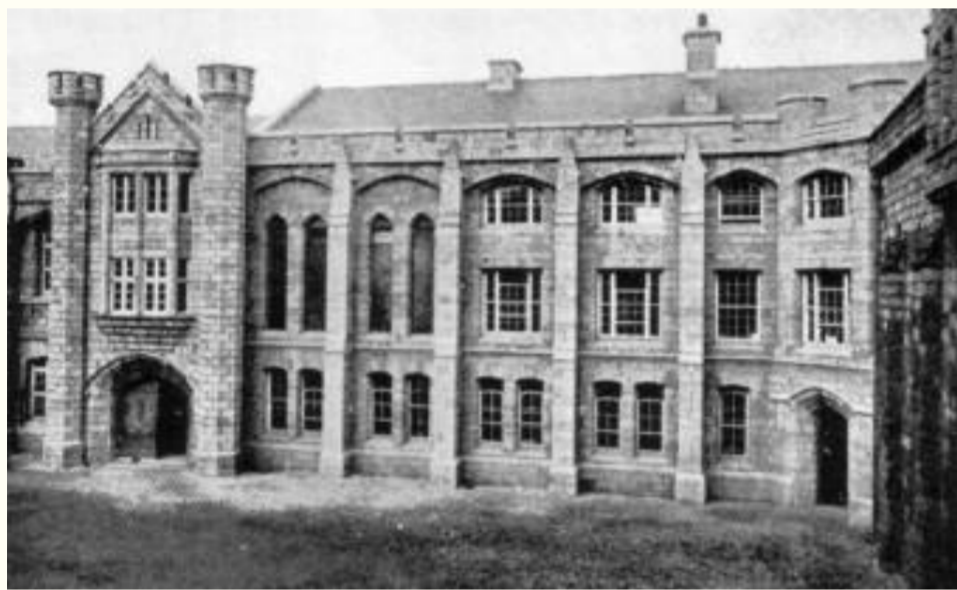
The east wing was completed and opened as a boarding house run by the Principal in April 1888, the swimming pool was completed in May. In 1894 the east wing was extended.



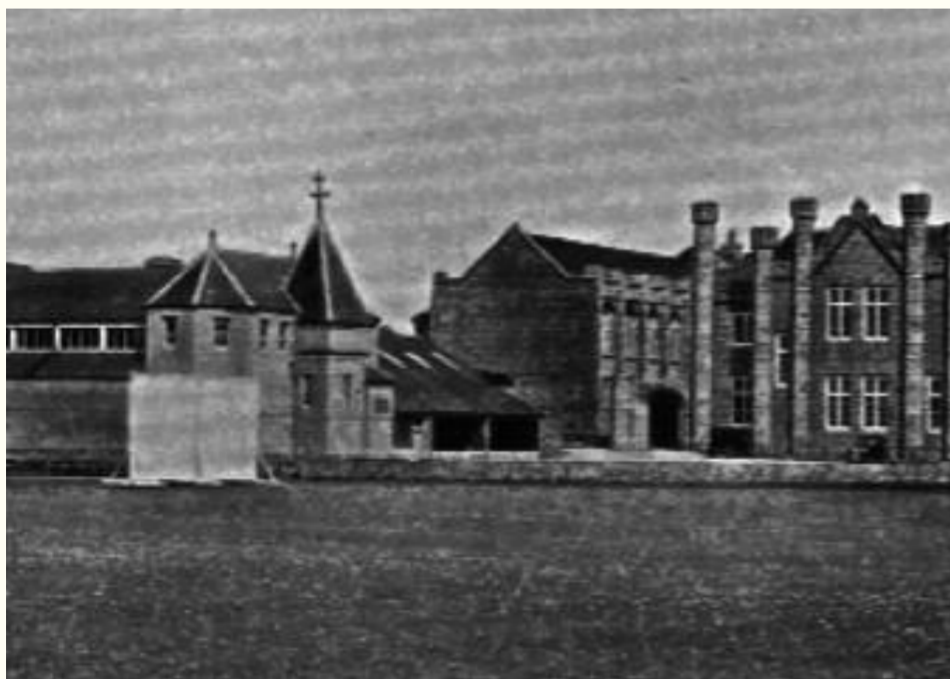
This photograph, taken in 1920, shows the Science School, which was completed in 1902. In the same year the 1st XI cricket pavilion was built.



The old gym was pulled down in 1904 and a new building with two floors was built to replace it. The ground floor contained workshops and the upper floor a combined gym and Big school with access via a stone staircase and entrance hall.



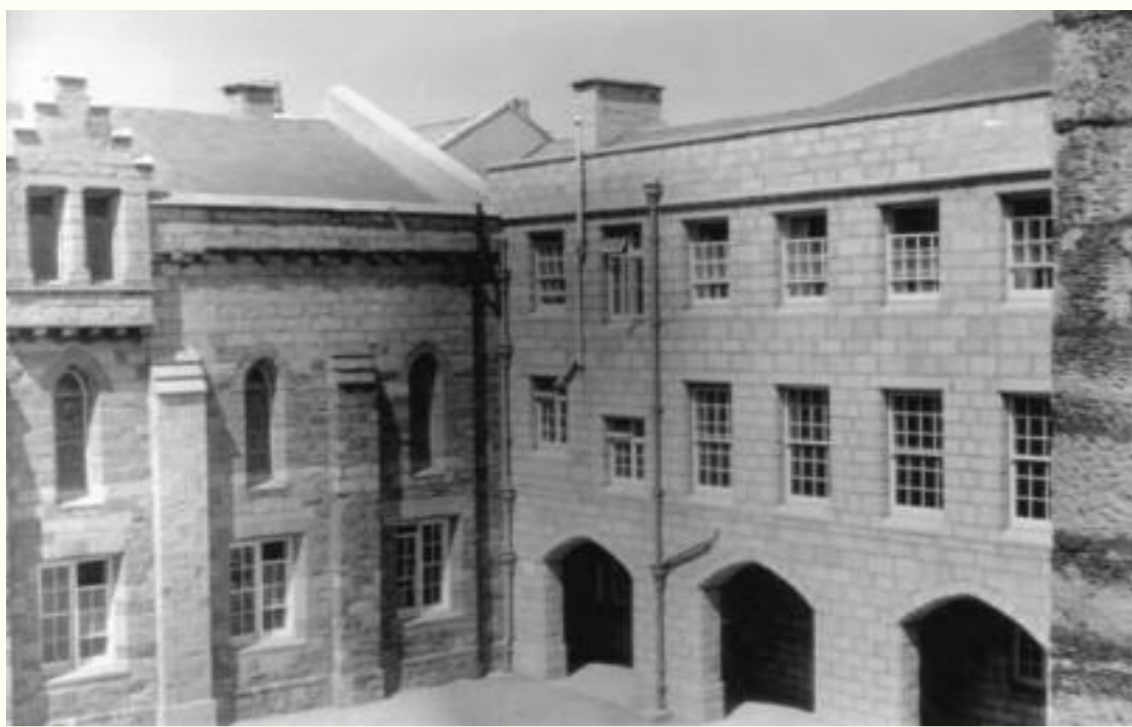
A view of the Walker Library, classrooms, dormitories and studies added in 1925-6.



This photograph, shows the new gate way at the western end of the Quadrangle, which was erected in 1926.



On the 26th July 1937 The Barrovian Hall was opened It was built to the north of the Tower, where the original Chapel had stood, with a new entrance into the Quadrangle.



The north-east wing was also completed in 1937. This block added a new kitchen, classrooms and a covered walkway.



Built in 1958, the north-west corner at night, showing the new science block extending over the West Gate archway to complete the missing corner of the King's Court.



The Senior centre was completed in 1976. New classrooms and a bar for students was provided.



The new Colbourne House, the major result of the 150th Anniversary Appeal, was opened in January 1981. This was the first boarding house to be built since 1888.